

# Streatham Picture House



July 2025 Newsletter



Since April 2025, NewmanFrancis have been working in partnership with PM Interiors on the remedial works at Streatham Picture House. The works are to repair the external roof coverings and internal areas damaged through water penetration to apartments and communal areas.

Majority of the works being undertaken are on Level 4 & Level 5 and therefore residents on these levels are directly impacted.

The works have been progressing well, and we can confirm the works to Phase 1 have now been completed. The graffiti to the front of the building has also been removed and the scaffolding to Phase 1 has now been removed.

Works to Phase 2 commenced in early July and are currently scheduled to be completed late August. We will also be sharing colour options for leaseholders to decide on the communal areas of Streatham Picture House.

## Key Dates

Phase 1 -

Front & Left Elevation  
(Fitness First Side)

Concluded  
(Apr-Jul 2025)

Phase 2 -

Right Elevation  
(Car Park Side)

Jul 2025 - Aug 2025

Phase 3 -

Rear of Picture House

Aug 2025 - Oct 2025

## Contractors Working Hours

General hours will be from  
8:00am to 5:00pm

Monday to Friday

# Streatham Picture House

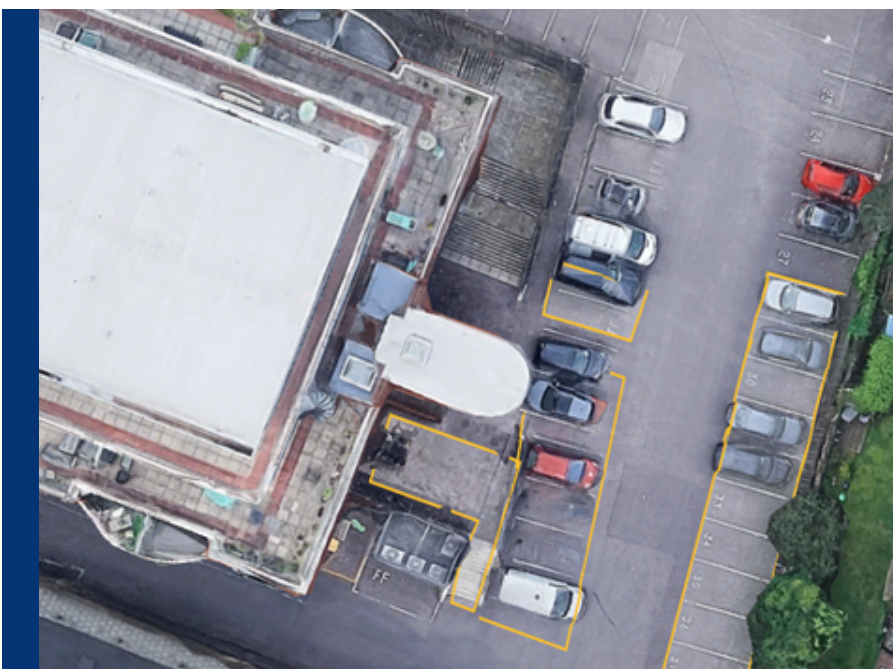


The parking arrangements continue to be in place as highlighted bays/area below will remain out of commission for the duration of the works.

We apologise for any disturbance and inconvenience caused by these works and thank you for your continued patience and understanding.

We will continue to keep you updated at all times. We will liaise with both owners and residents directly to ensure the works are carried out both swiftly and efficiently.

As your Resident Liaison Officers, if you have any questions or concerns, please do not hesitate to reach out to us. We will be happy to assist you and provide the support you need.



## Contact Us:

0800 644 6040

[SPH@newmanfrancis.org](mailto:SPH@newmanfrancis.org)

<https://newmanfrancis.org/sph/>

---

Syed  
Senior RLO

07749 506 365

Monday - Thursday  
9am to 5pm

---

Lindsey  
Project Support

07729 657 317

Tuesday - Friday  
9am to 5pm

## Level 4 & 5 Residents Only

Please refrain from smoking on the terraces during your phase of works.

THE TERRACES CANNOT BE USED DURING CONTRACTORS WORKING HOURS